

Item No: SUT-9F25



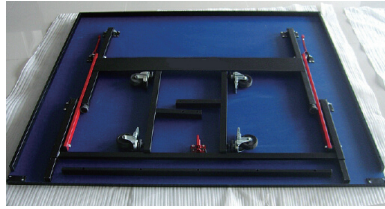
INSTRUCTION MANUAL

A large grey rectangular area at the bottom of the page, likely a placeholder for a logo or additional information.

PARTS LIST

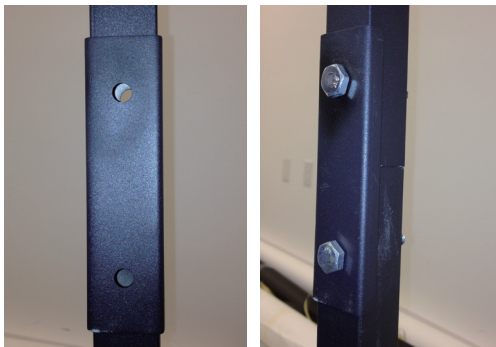
	Part Description	Quantity
1	Table Surface w/ Undercarriage Assembly	2
2	T Leg	4
3	Caster	8
4	Bolt Plate	8
5	Bolt	8
6	Metal Washer	16
7	Nylon Locking Nut	8

ASSEMBLY INSTRUCTIONS



1. Place table flat with playing surface down. When you set the table down, make sure that the space beneath it is clear of anything that can scratch the surface.

2. Unlock the undercarriage and raise the legs to a vertical position.



3. Lower the T-Leg into position. Apply bolt plate to junction of T-Leg and undercarriage. Insert bolt before positioning washer and nut to tighten. Then, tighten bottom bolt as well.

4. Twist the casters into the bottom of the T-Leg.



5. Re-lock the undercarriage into the storage position and raise the table onto the wheels. Standing table up may require two people! Please be careful and read warning below.

WARNING: End legs (without casters) should be in locked, storage position so that weight of the table is fully on the undercarriage (with casters) during set up. Damage may result if table set up procedure is not executed as specified in the instructions.

All assembly instructions and all descriptions of bolts and parts are given from the point of view of someone outside looking inward.

NOTE: The two halves do not connect to one another. They remain two separate pieces. You will apply the net to the middle where they meet .

YOU ARE NOW READY TO PLAY!

